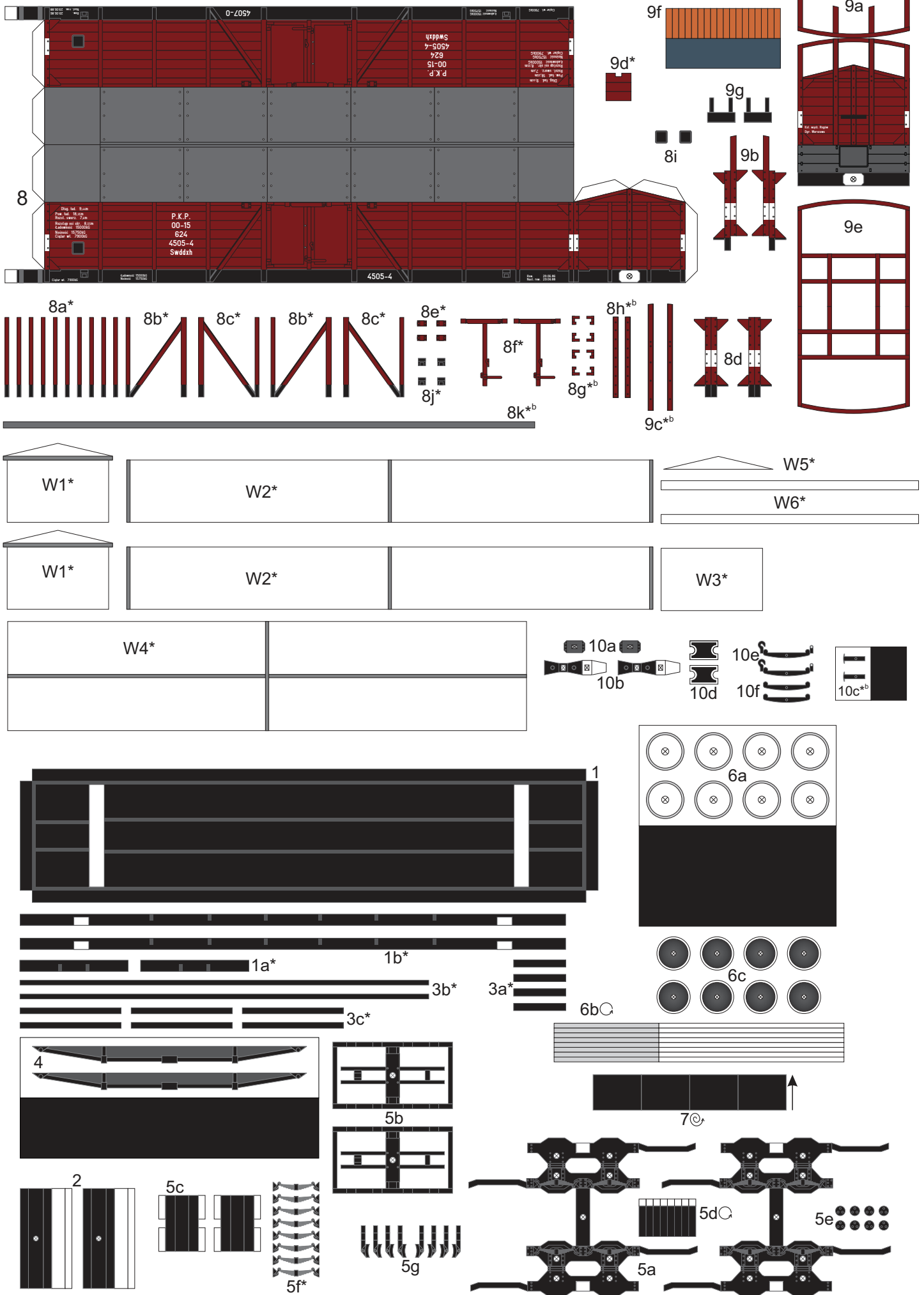
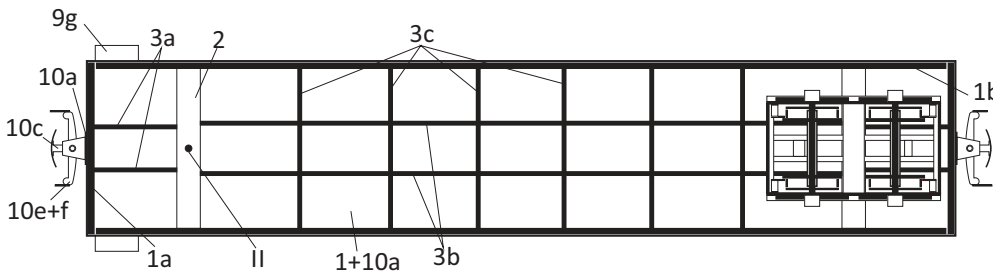
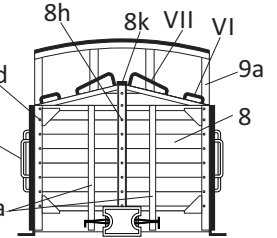
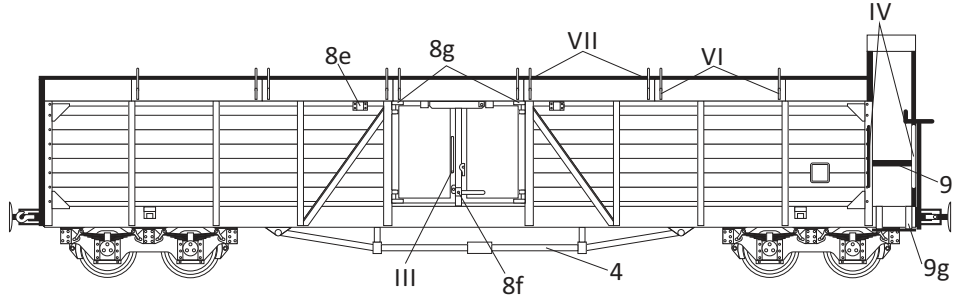
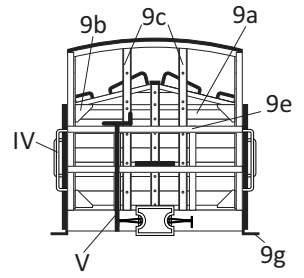
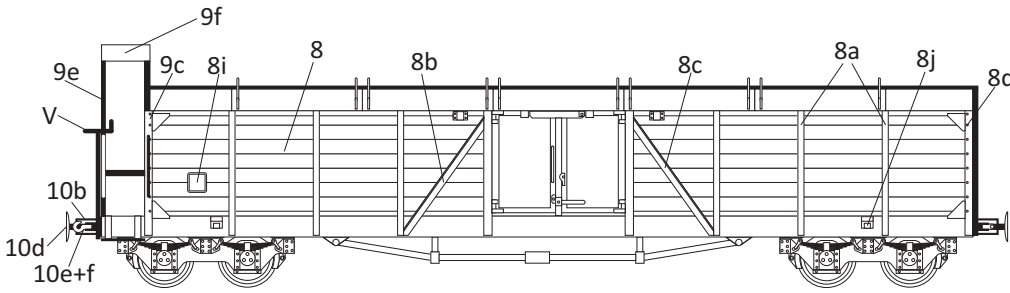


Wagon wapniarka serii Swddxh typu 60W

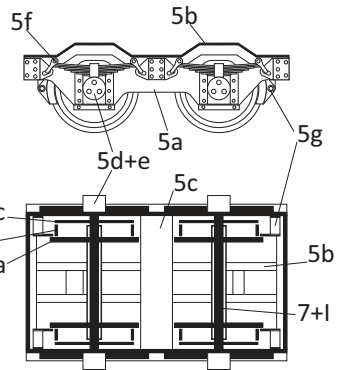


Instrukcja

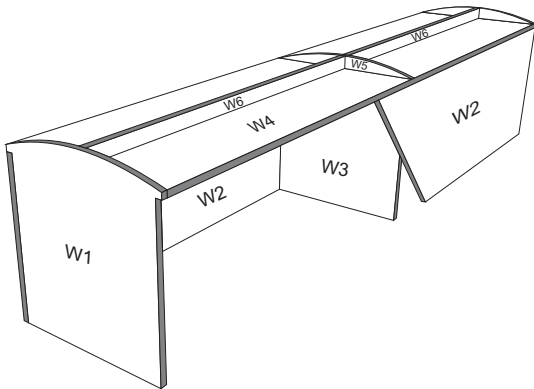


Wózki

(skala 1,5:1)



Schemat montażu wręgów



Objaśnienia

*^b - podkleić brystolem

* - podkleić kartonem 0,5mm

⊙ - zwinąć w walec (widoczny tylko fragment zabarwiony)

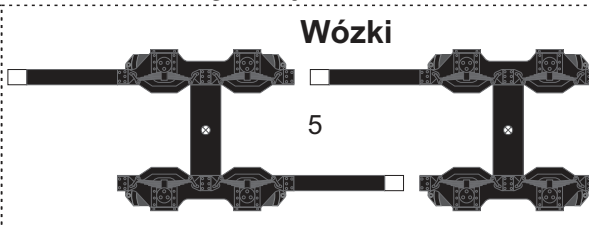
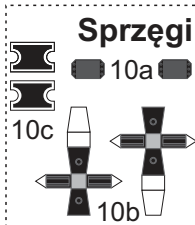
⊙ - zwinąć ciasno

→ - kierunek zwijania

Elementy do wykonania z drutu

- I - Ø1,0mm - 4szt.
- II - Ø1,0mm - 2szt.
- ⌒ III - Ø0,25mm - 2szt.
- ⌒ IV - Ø0,25mm - 4szt.
- ⌒ V - Ø0,5mm - 1szt.
- ⌒ VI - Ø0,25mm - 20szt.
- ⌒ VII - Ø0,25mm - 20szt.

Części uproszczone



Belki skrętowe dla modelu bez elementów ostoi (tj. 1a, 1b, 3...)

